

## Conectores de RF tipo Micro Coaxial

Conectores de RF tipo 1.0 / 2.3 DIN.  
RF Connectors 1.0 / 2.3 DIN type.



USM 02000: P/ Cabo / Cable RF75 0,3/1,8  
USM 02000-B: P/ Cabo / Cable RF75 0,4/2,5

### CONECTOR MICRO COAXIAL MACHO RETO DE CRIMP

CONECTOR DIN 1.0 / 2.3, MACHO,  
RECTO, CRIMP.  
DIN 1.0 / 2.3 CONNECTOR, MALE,  
STRAIGHT, CRIMP.

## Conectores de RF tipo MCX

Conectores de RF tipo MCX.  
RF Connectors MCX type.



USM 01001: P/ Cabo / Cable RG174/179  
USM 01001-B: P/ Cabo / Cable RF75 0,3/1,8

### CONECTOR MCX MACHO ANGULAR DE CRIMP

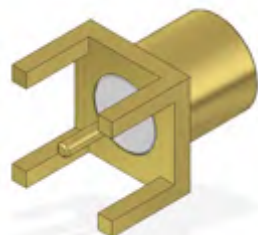
CONECTOR MCX, MACHO ACODADO, CRIMP.  
MCX CONNECTOR, ANGULAR MALE, CRIMP.



USM 01002: P/ Cabo / Cable RG174

### CONECTOR MCX MACHO RETO DE CRIMP

CONECTOR MCX, MACHO, RECTO, CRIMP.  
MCX CONNECTOR, MALE, STRAIGHT, CRIMP.



USF 01000

### CONECTOR MCX FÊMEA RETO PARA PCI

CONECTOR MCX, HEMBRA, RECTO, PARA PCI.  
MCX CONNECTOR, FEMALE, STRAIGHT, FOR PCI.